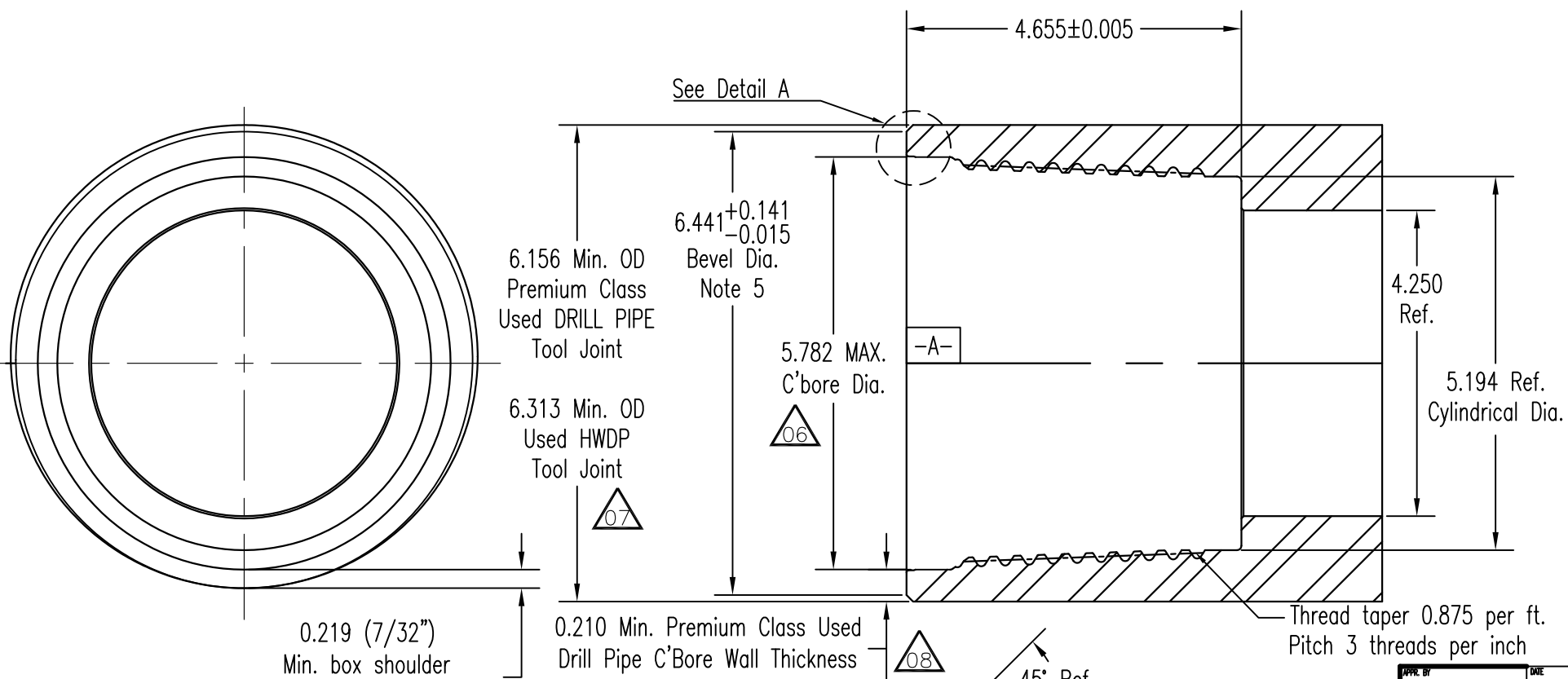


THREAD DETAIL

DESCRIPTION PTech55+ BOX FIELD INSPECTION DIMENSIONS		
PRINT NO. FID-PTech55+B1025	REVISION 08	SHEET 1 OF 1

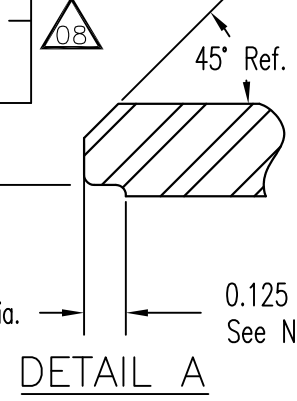
CAD DOCUMENT  DO NOT SCALE

CAD DOCUMENT  DO NOT SCALE



NOTES:

1. Remove sharp corners.
2. Threads must be free of burrs, chatter indication and abnormalities.
3. Lead Tolerance shall be measured over a 2" interval and shall not exceed 0.006"
4. 0.125 is new condition may be refaced to 0.062
5. Bevel $\frac{1}{32}$ x 45°, if OD < 6.503" and as needed for eccentric wear.

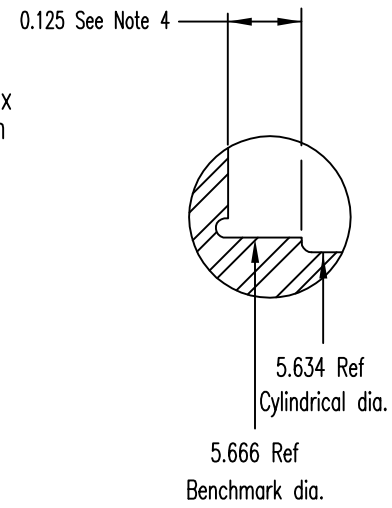
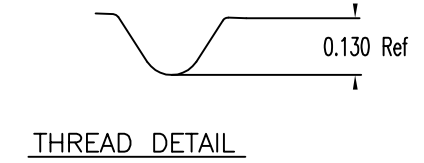
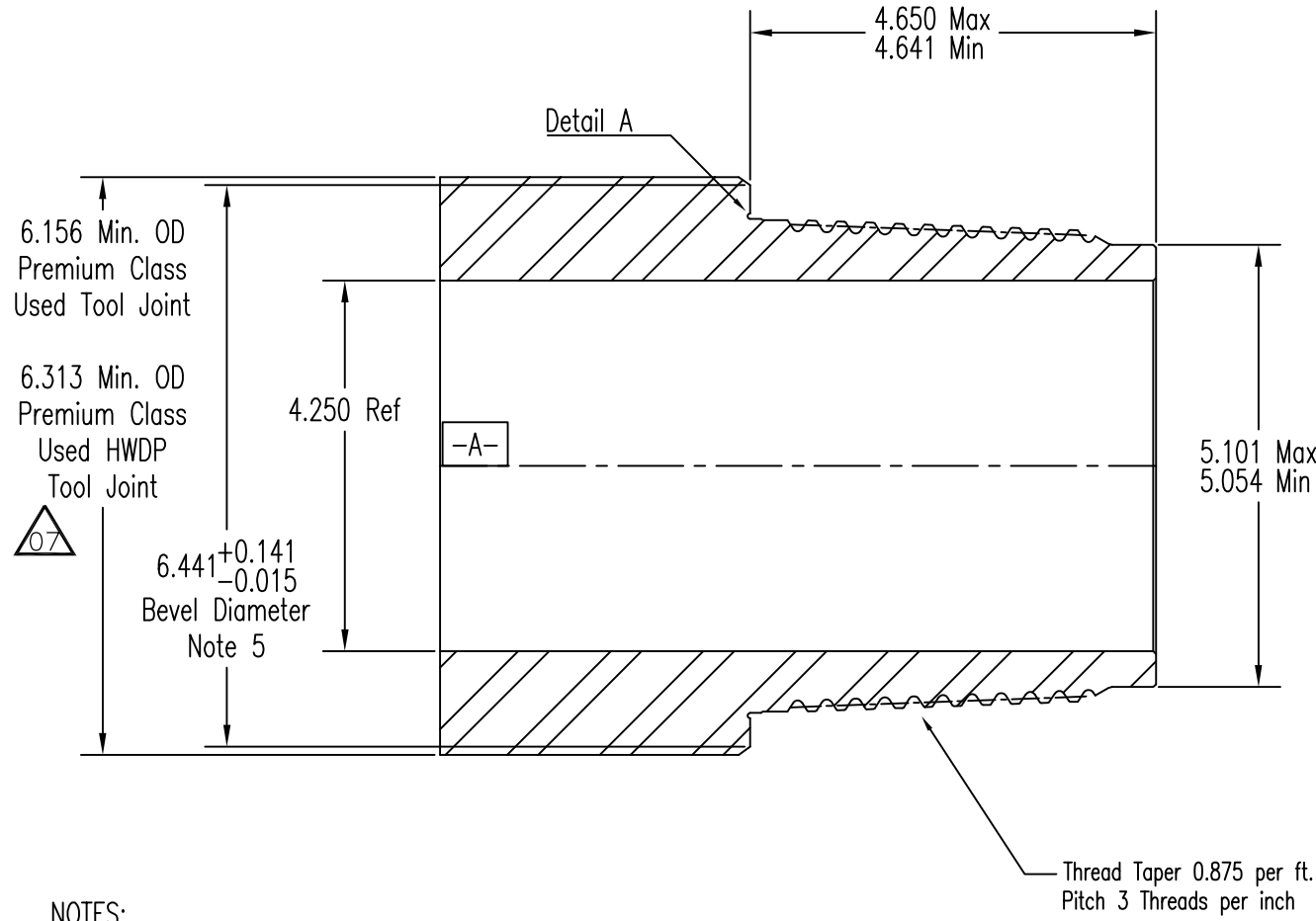


TOLERANCES UNLESS OTHERWISE SPECIFIED
 .XXX ± 0.005
 ∠ ± 1'
 BREAK ALL SHARP EDGES
 MACHINED SURFACE FINISH = $\sqrt{125}$ MAX.

APPR. BY	DATE	
M GARRETT	JUN 10, 2024	
CHKD BY	DATE	
J HUBBARD	JUN 10, 2024	
08	ECN20240610A Jun 10, '24	
07	ECN20230421A Apr 21, '23	
06	ECN20230109A Jan 09, '23	
05	ECN20221110A 11/10/22	
04	ECN0572 11/01/21	
03	ECN0568 10/21/21	
02	ECN0566 10/21/21	
01	ECN0557 07/15/21	
REV.	ECN#	DATE
REVISIONS		
DRAWN BY	NW	DATE: 02/06/18
CHECKED BY	NW	SCALE: 1:1



DESCRIPTION		
PTech55 PIN FIELD INSPECTION DIMENSIONS		
PRINT NO.	REVISION	SHEET
FID-PTech55 PTD 1024	07	1 OF 1



NOTES:

1. Remove sharp corners.
2. Threads must be free of burrs, chatter indication and abnormalities.
3. Lead Tolerance shall be measured over 2" intervals and shall not exceed 0.006"
4. 0.125 is new condition may be 0.188 max. after refacing.
5. Bevel 1/32x45°, if OD < 6.503" and as needed for eccentric wear.

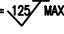
Performance Technology
Plus Connections

TOLERANCES UNLESS OTHERWISE SPECIFIED

.XXX ± 0.005

∠ ± 1°

BREAK ALL SHARP EDGES

MACHINED SURFACE FINISH =  MAX.

APPR. BY	DATE
Hala Wechsler	01/25/22
CHK'D BY	DATE
Hala Wechsler	01/25/22
07	ECN20230421A Apr 21, '23
06	ECN0582 01/25/22
05	ECN0571 10/25/21
04	ECN0570 10/22/21
03	ECN0568 10/21/21
02	ECN0566 10/21/21
01	ECN0556 07/15/21
REV.	ECN# DATE
REVISIONS	
DRAWN BY	DATE
NW	02/06/18
CHECKED BY	SCALE
NW	1:1

Copyrighted as an unpublished work. ALL RIGHTS RESERVED. This work contains the CONFIDENTIAL AND PROPRIETARY INFORMATION of Texas Steel Conversion Inc. Neither this document nor any information disclosed herein shall be reproduced in any form, used, or disclosed to others for any purpose including manufacturing without the express written permission of Texas Steel Conversion, Inc.

CAD DOCUMENT  DO NOT SCALE

CAD DOCUMENT  DO NOT SCALE