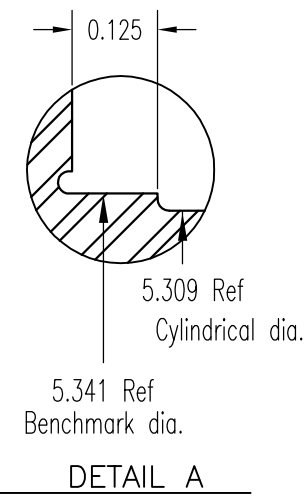
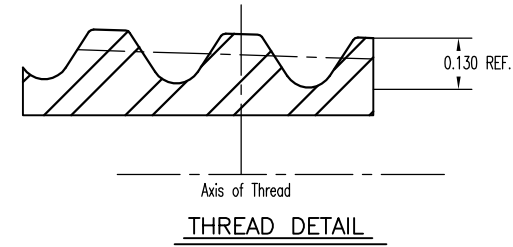
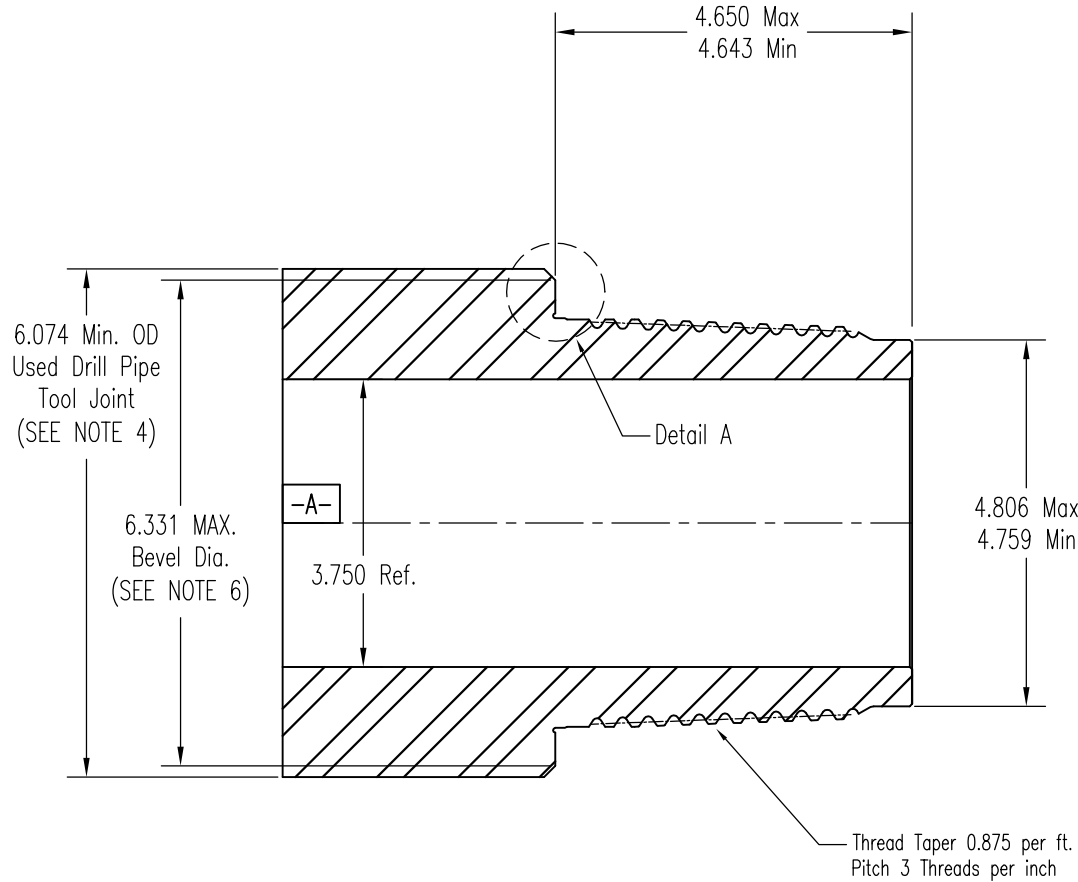






|  |          |        |
|--|----------|--------|
| DESCRIPTION                                |          |        |
| PTech52 PIN<br>FIELD INSPECTION DIMENSIONS |          |        |
| PRINT NO.                                  | REVISION | SHEET  |
| FID-PTech52 PTD 2707                       | 01       | 1 OF 1 |



Note: 0.125 is new condition. Reface is acceptable to 0.188"

Copyrighted as an unpublished work. ALL RIGHTS RESERVED This work contains the CONFIDENTIAL AND PROPRIETARY INFORMATION of Texas Steel Conversion Inc. Neither this document nor any information disclosed herein shall be reproduced in any form, used, or disclosed to others for any purpose including manufacturing without the express written permission of Texas Steel Conversion Inc.

CAD DOCUMENT  DO NOT SCALE

CAD DOCUMENT  DO NOT SCALE

- NOTES:
1. Remove sharp corners.
  2. Threads must be free of burrs, chatter, and conform to the requirements of the PTECH+ Field Inspection Procedure.
  3. Lead Tolerance shall be measured over a 2" length and shall not exceed 0.006". If exceeding 0.006", re-machining is required.
  4. A larger OD may be required for a specific drill pipe weight and grade..
  5. Dimensions without a tolerance are for reference only.
  6. Bevel the OD by 1/32" x 45° if the OD < 6.074" and as needed for eccentric wear

## Performance Technology Plus Connections

|   |  |
|---|--|
| TOLERANCES UNLESS OTHERWISE SPECIFIED       |  |
| .XXX ± 0.005                                |  |
| ∠ ± 1°                                      |  |
| BREAK ALL SHARP EDGES                       |  |
| MACHINED SURFACE FINISH = $\sqrt{125}$ MAX. |  |

|            |              |  |               |
|------------|--------------|--|---------------|
| APPR. BY   | John Hubbard | DATE   | Dec 14, 2023  |
| CHK'D BY   | Mark GARRETT | DATE   | Dec 14, 2023  |
| REV.       | BY           | ECN#   | DATE          |
| 01         | JMH          | Changed pin length tolerance from +0.006/-0.009 to +0.000/-0.007 | Dec 14, 2023  |
| REVIEWS    |              |  |               |
| DRAWN BY   | MSG          | DATE   | July 25, 2023 |
| CHECKED BY | MSG          | SCALE  | 1:1           |