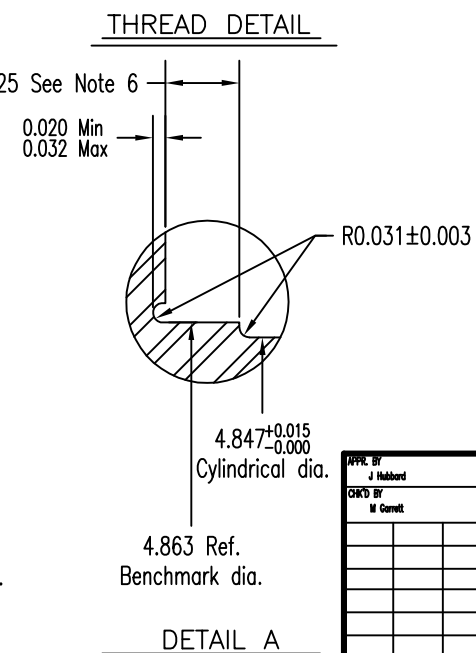
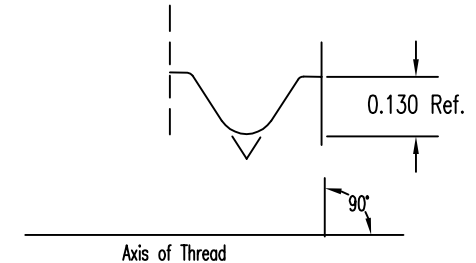
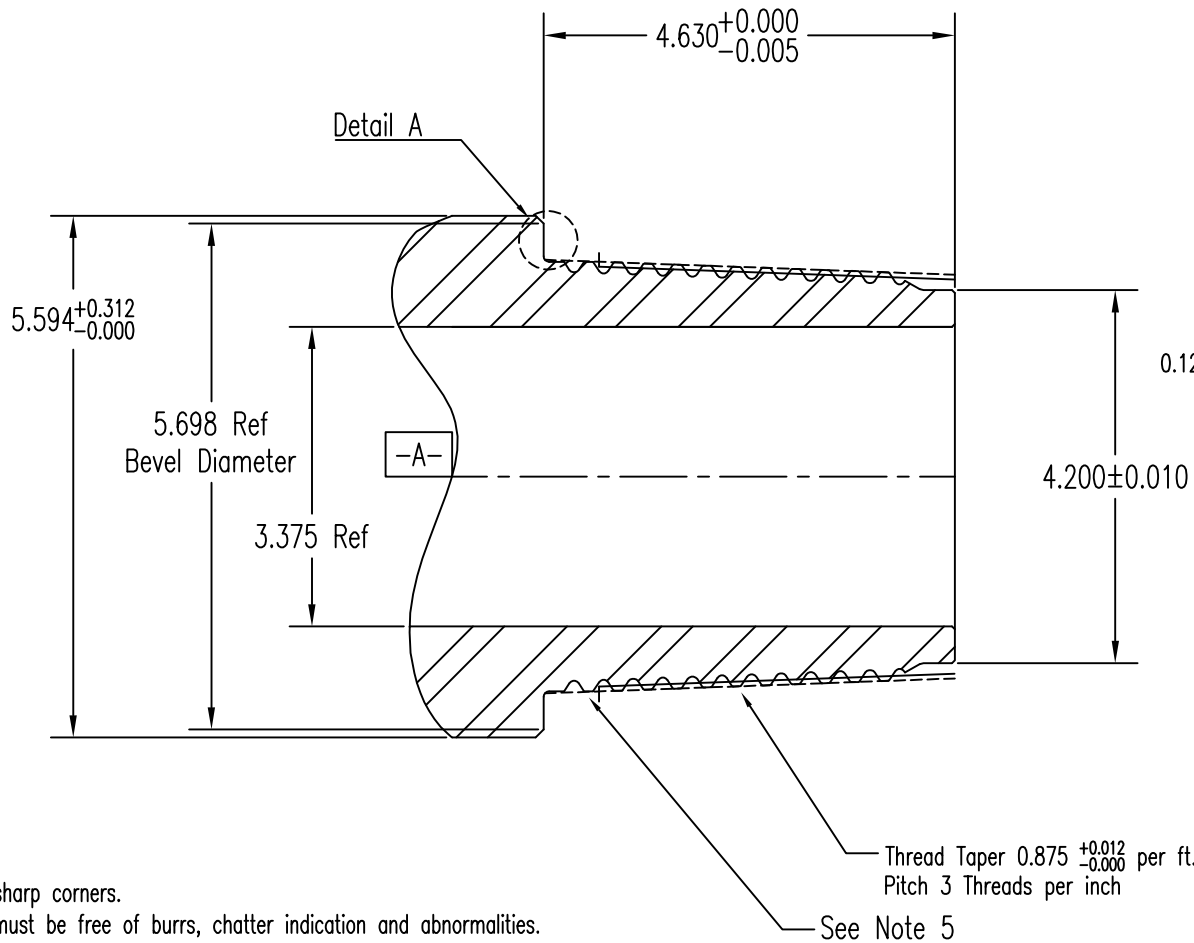






|                             |          |        |
|-----------------------------|----------|--------|
| DESCRIPTION                 |          |        |
| PTech47 PIN                 |          |        |
| FIELD INSPECTION DIMENSIONS |          |        |
| PRINT NO.                   | REVISION | SHEET  |
| FID-PTech47 PTD 2701        | 01       | 1 OF 1 |



NOTES:

1. Remove sharp corners.
2. Threads must be free of burrs, chatter indication and abnormalities.
3. Lead Tolerance:
  - a. Over 3 total threads  $\pm 0.0015$
  - b. Over total thread length  $\pm 0.0025$  or the sum of .001 for per inch within the total thread length, whichever is greater
4. Remove sharp corners of imperfect threads by machining.
5. Thread pull out shall be in lead.
6. 0.125 is new condition, may be 0.188 max. after refacing.

**CONFIDENTIAL**

**Performance Technology  
Plus Connections**

TOLERANCES UNLESS OTHERWISE SPECIFIED  
 .XXX  $\pm 0.005$   
 $\angle \pm 1^\circ$   
 BREAK ALL SHARP EDGES  
 MACHINED SURFACE FINISH =  $\sqrt{125}$  MAX.

|                       |                  |  |          |
|-----------------------|------------------|--|----------|
| APPR. BY<br>J Hubbard | DATE<br>12/14/23 |  |          |
| CHKD BY<br>M Corvitt  | DATE<br>12/14/23 |  |          |
| REV.                  | BY               | ECN#   | DATE     |
| 01                    | JMH              | Changed pin length tolerance from +0.000/-0.020 to +0.005/-0.005 | 12/14/23 |
| REVISIONS             |                  |  |          |
| DRAWN BY<br>JC        |                  | DATE<br>01/27/21   |          |
| CHECKED BY<br>NW      |                  | SCALE<br>1:1   |          |

Copyrighted as an unpublished work. ALL RIGHTS RESERVED. This work contains the CONFIDENTIAL AND PROPRIETARY INFORMATION of Texas Steel Conversion Inc. Neither this document nor any information disclosed herein shall be reproduced in any form, used, or disclosed to others for any purpose including manufacturing without the express written permission of Texas Steel Conversion, Inc.

CAD DOCUMENT  DO NOT SCALE

CAD DOCUMENT  DO NOT SCALE