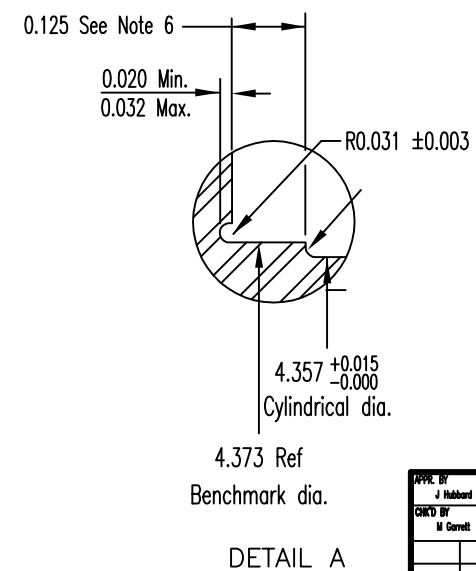
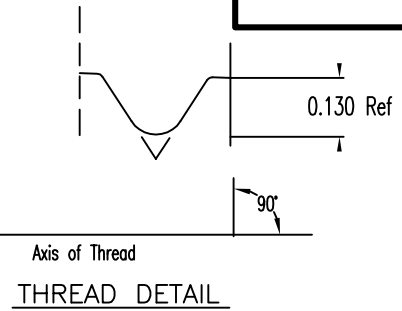
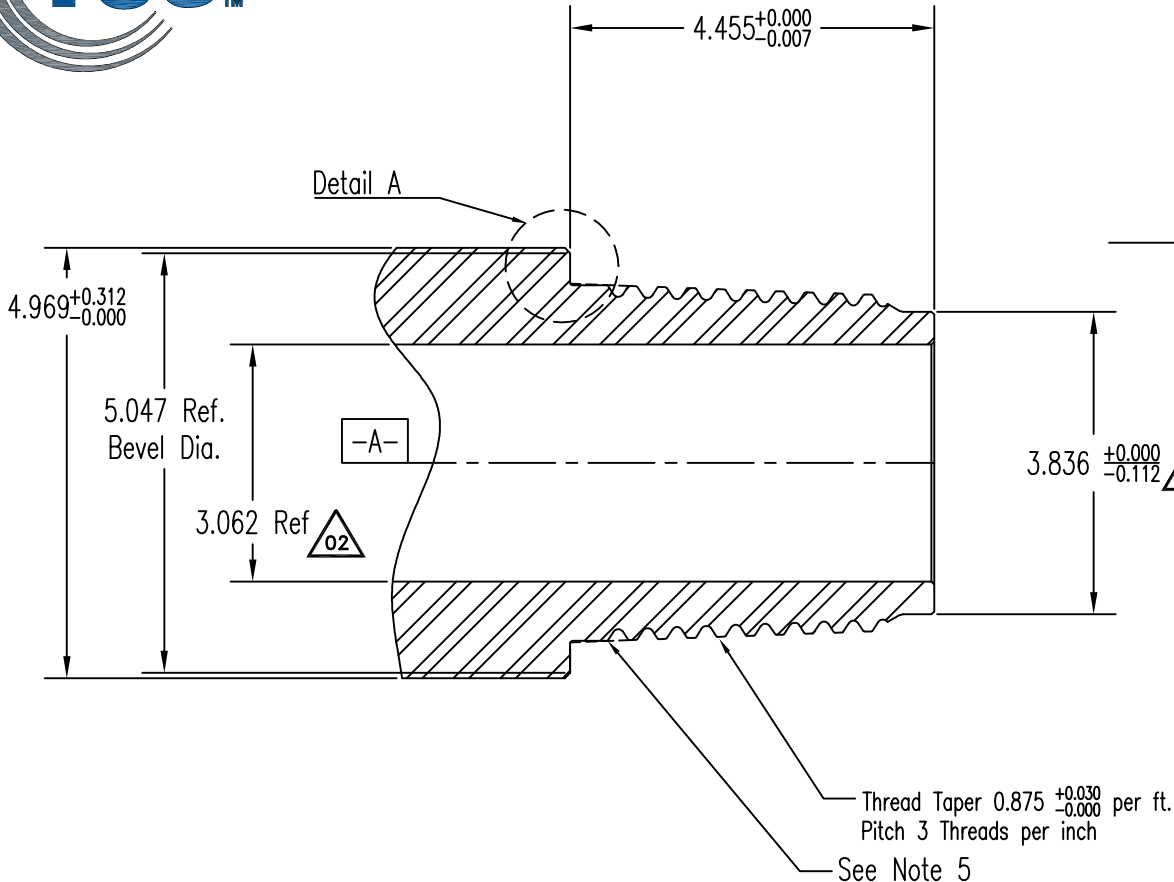




DESCRIPTION PTech43 PIN FIELD INSPECTION DIMENSIONS		
PRINT NO. FID-PTech43 PTD 1007	REVISION 04	SHEET 1 OF 1



- NOTES:
1. Remove sharp corners.
 2. Threads must be free of burrs, chatter indication and abnormalities.
 3. Lead Tolerance:
 - a. Over 3 total threads ± 0.0015
 - b. Over total thread length ± 0.0025 or the sum of .001 for per inch within the total thread length, whichever is greater
 4. Remove sharp corners of imperfect threads by machining.
 5. Thread pull out shall be in lead.
 6. 0.125 is new condition, may be 0.188 max. after refacing.

CONFIDENTIAL

**Performance Technology
Plus Connections**

TOLERANCES UNLESS OTHERWISE SPECIFIED
 .XXX ± 0.005
 $\angle \pm 1'$
 BREAK ALL SHARP EDGES
 MACHINED SURFACE FINISH = $\sqrt{125}$ MAX.

APPR. BY J Hubbard	DATE 12/14/23		
CHKD BY M Carroll	DATE 12/14/23		
04	JMH Changed pin length tolerance from +0.000/-0.009 to +0.000/-0.007	12/14/23	
03	ECN20231011A	10/11/23	
02	ECN20221104B	11/04/22	
01	ECN0483	05/14/18	
REV.	BY	ECN#	DATE
REVISIONS			
DRAWN BY	NW	DATE	09/12/14
CHECKED BY	NW	SCALE	1:1

Copyrighted as an unpublished work. ALL RIGHTS RESERVED This work contains the CONFIDENTIAL AND PROPRIETARY INFORMATION of Texas Steel Conversion Inc. Neither this document nor any information disclosed herein shall be reproduced in any form, used, or disclosed to others for any purpose including manufacturing without the express written permission of Texas Steel Conversion, Inc.

CAD DOCUMENT  DO NOT SCALE

CAD DOCUMENT  DO NOT SCALE